



NILE AVENUE

e l m o h a n d e s i n

starting space area

130 m²

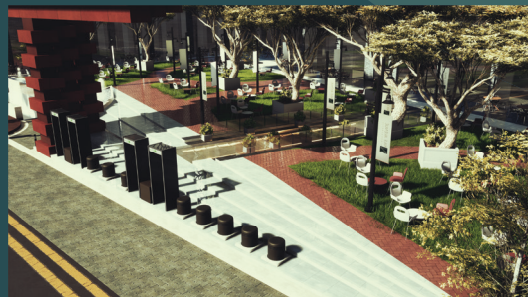
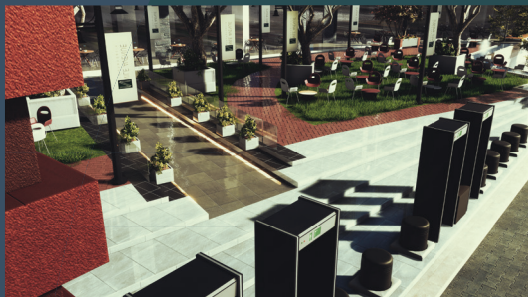
flats apartment





Nile Avenue is one of Al Halawany Group projects, it consists commercial units and green areas that achieve the highest quality standards for these residential areas.

Accordingly, this block was studied by the largest advisory offices until we reached the most extraordinary system that safe housing concept by responding to all earthquake-specific natural disasters. Nile Avenue has a beautiful view and is surrounded by four main streets, giving the project a distinctive touch regarding location and design.



Master Plan



Facilities

The project contains a two-level underground garage with a capacity of 560 vehicles.

The project consists of five buildings, each with its own entrance, two elevators and entrances, all made of marble, walls and floors. There are also reception and security offices for safety.



Garage



Reception



Entrance

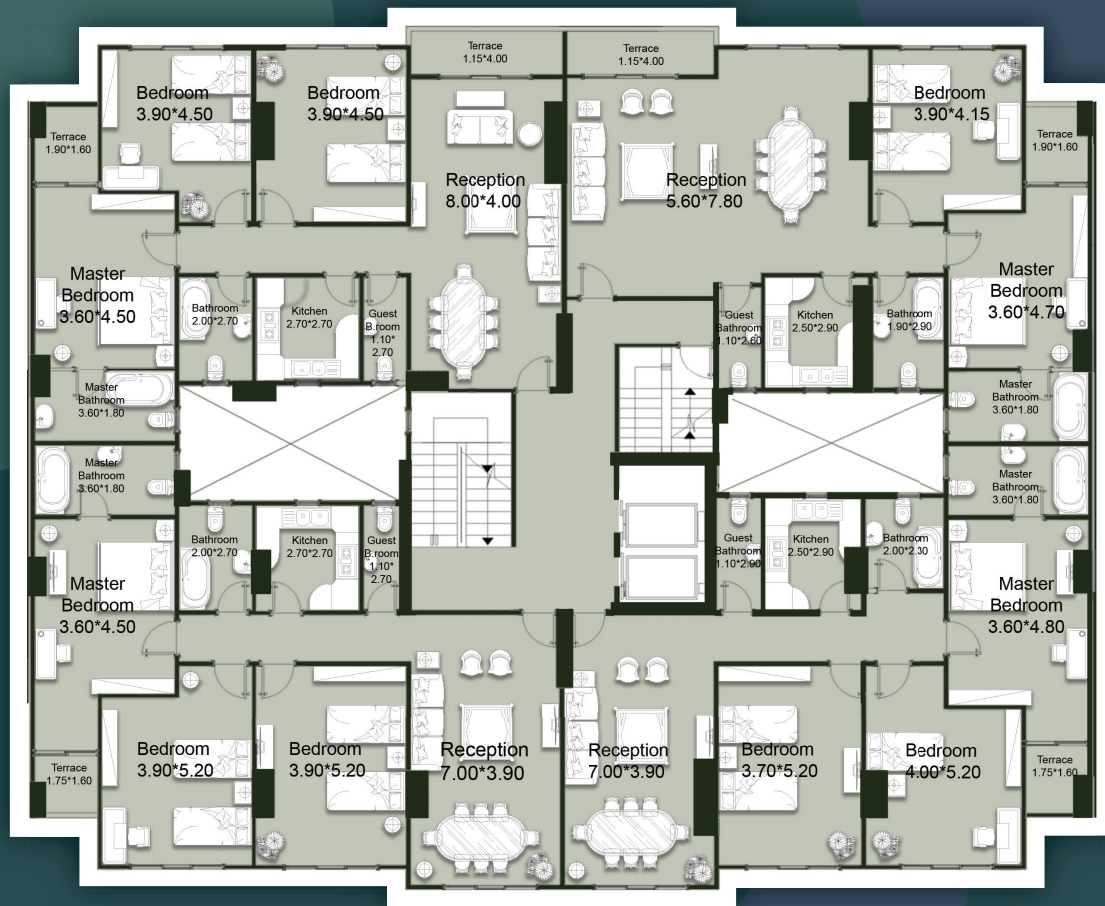


Security



Elevators

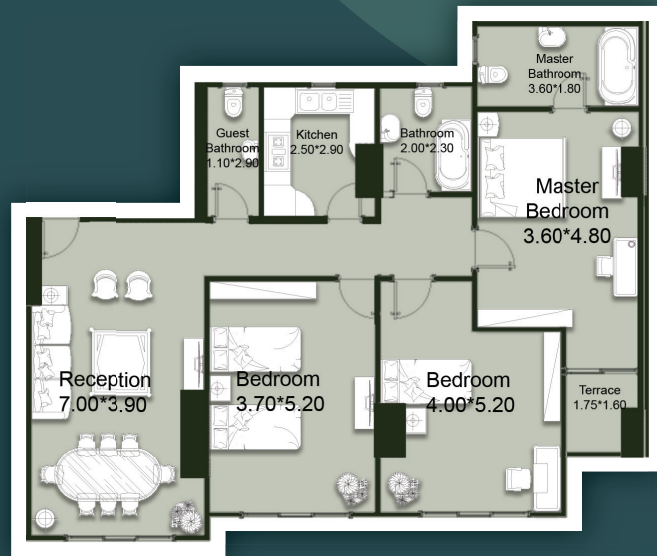
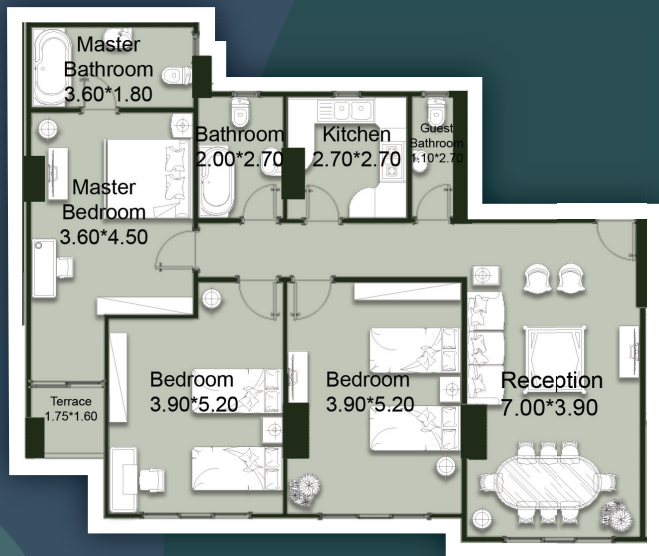
1



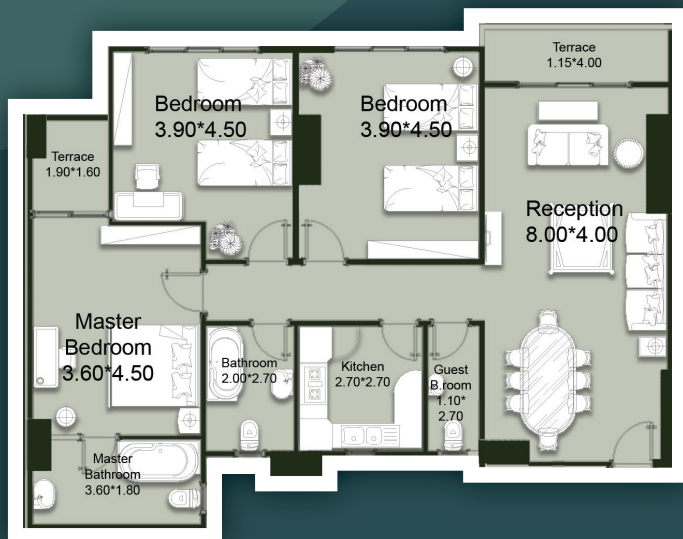
Net Area: 126.62
Gross Area: 145.61



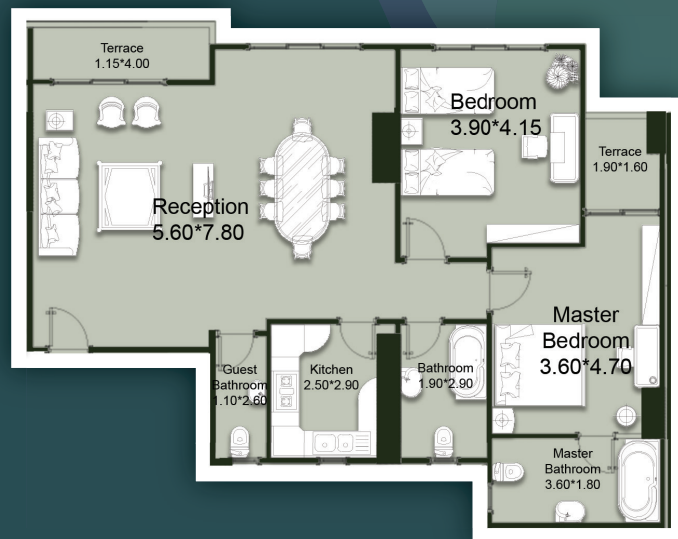
Net Area: 127.20
Gross Area: 146.28



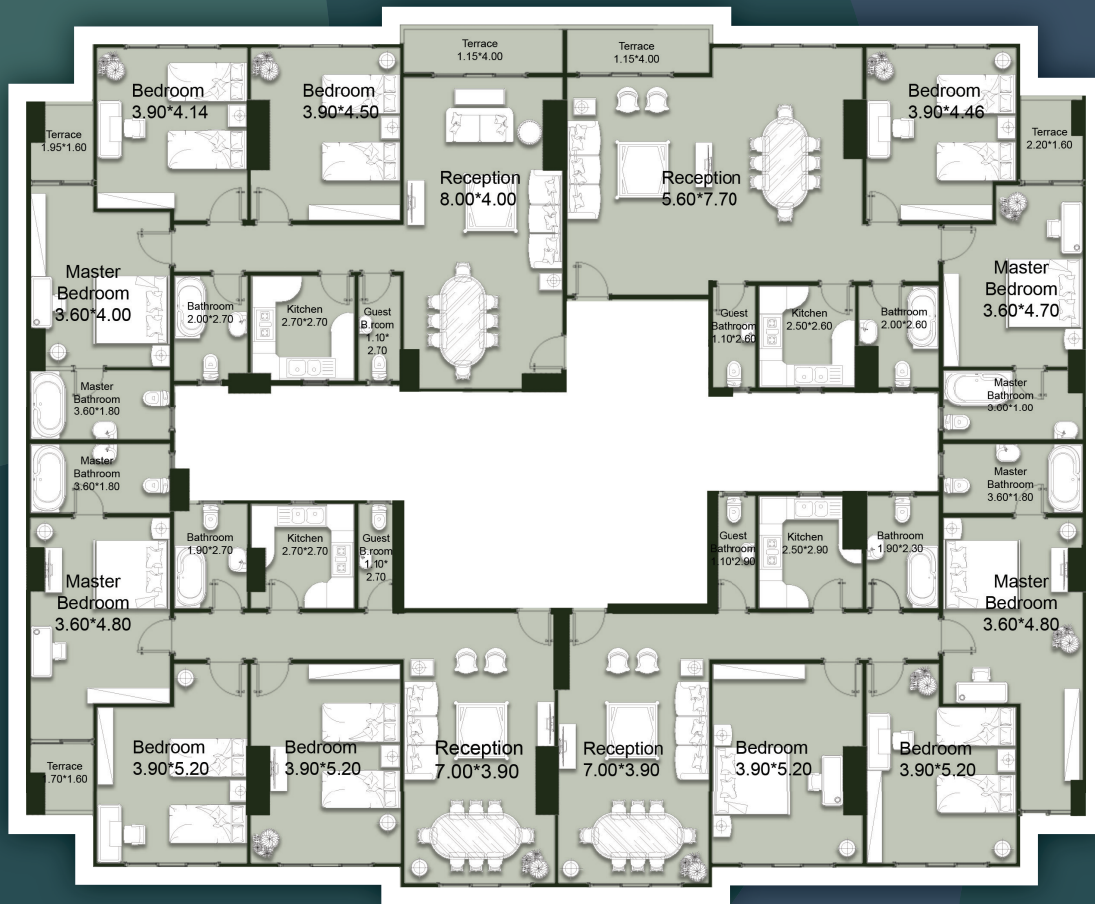
Net Area: 128.65
Gross Area: 147.94



Net Area: 119.08
Gross Area: 136.94



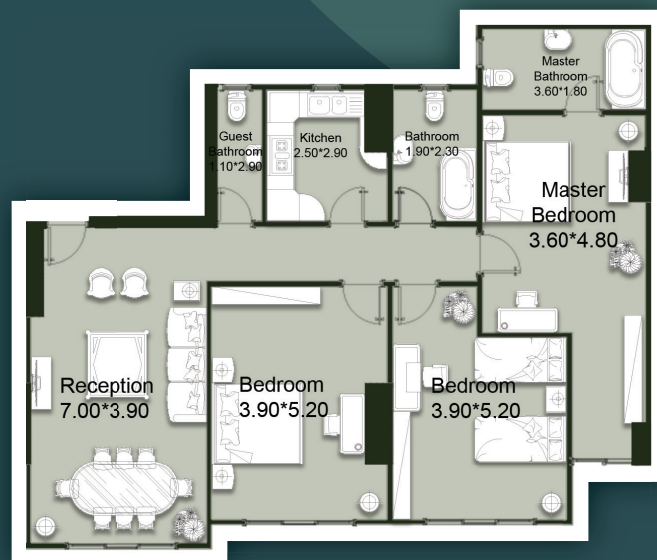
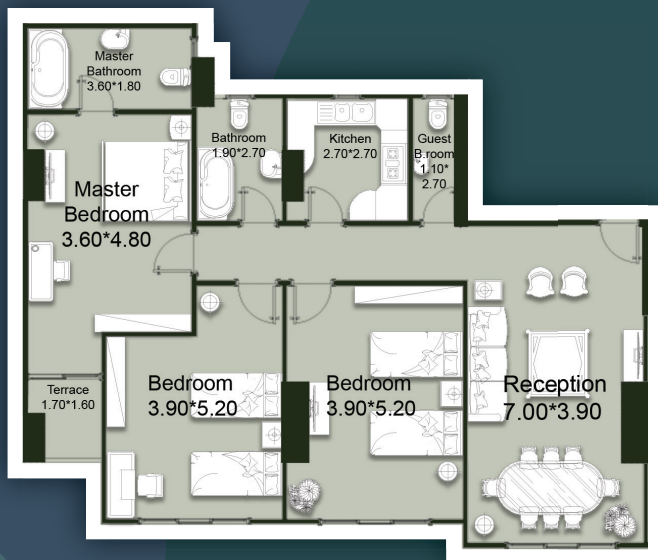
2



Net Area: 126.37
Gross Area: 145.32



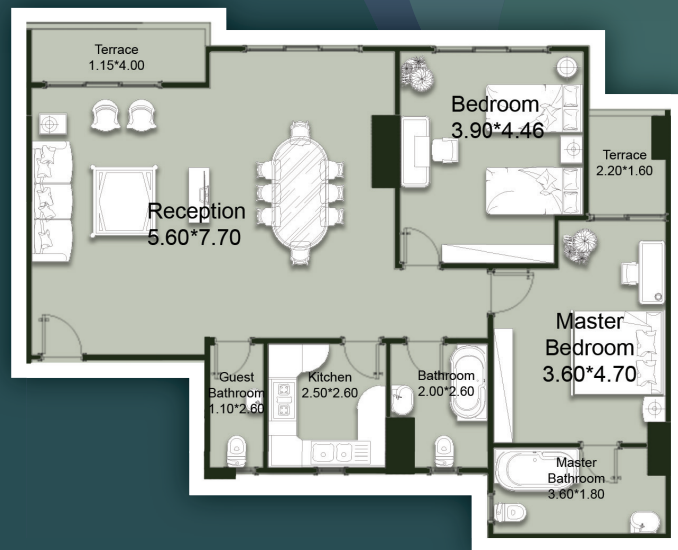
Net Area: 127.87
Gross Area: 146.36



Net Area: 130.05
Gross Area: 149.55



Net Area: 118.08
Gross Area: 135.79





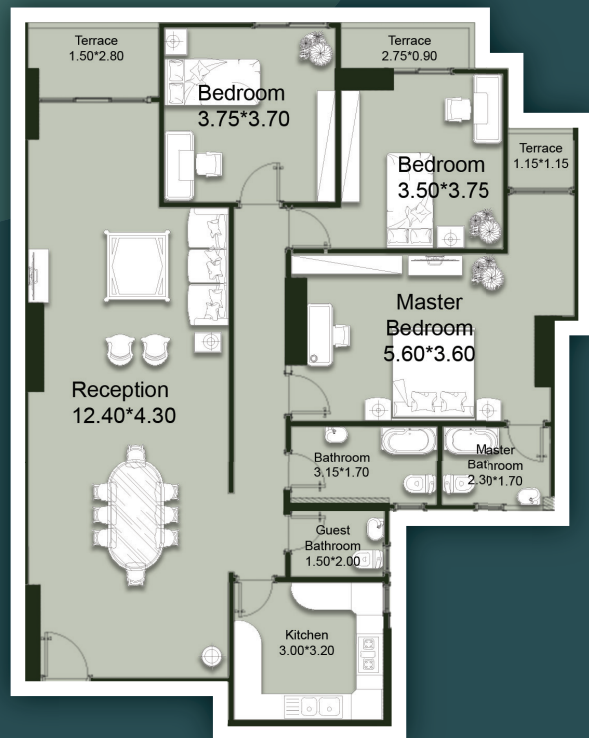
Net Area: 182.10
Gross Area: 209.41



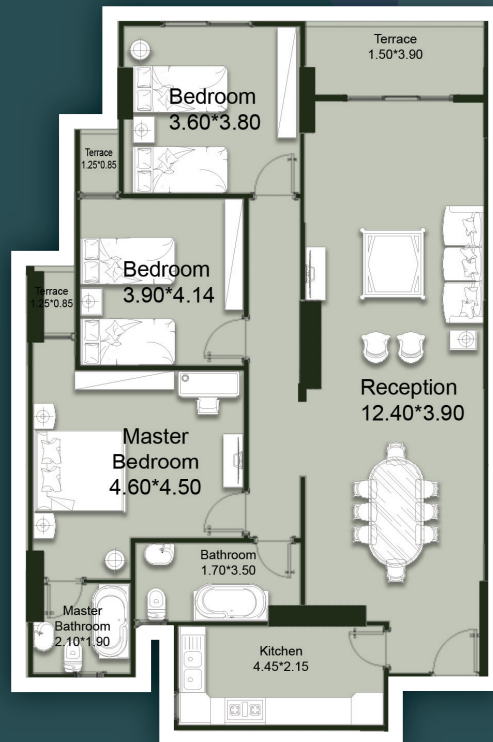
Net Area: 210.12
Gross Area: 241.63



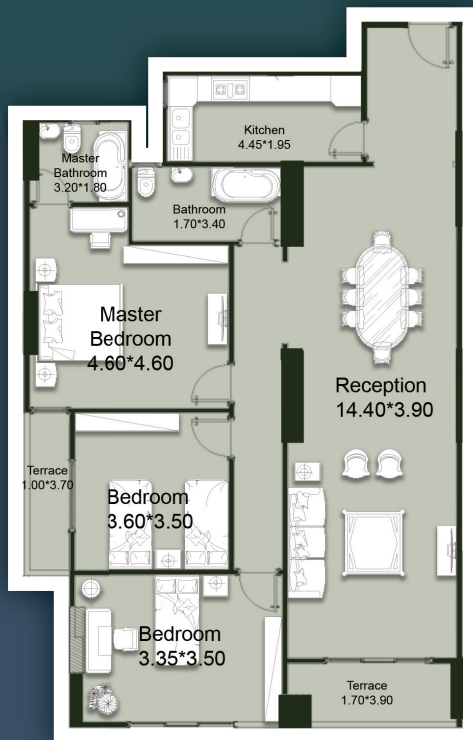
Net Area: 150.70
Gross Area: 173.30



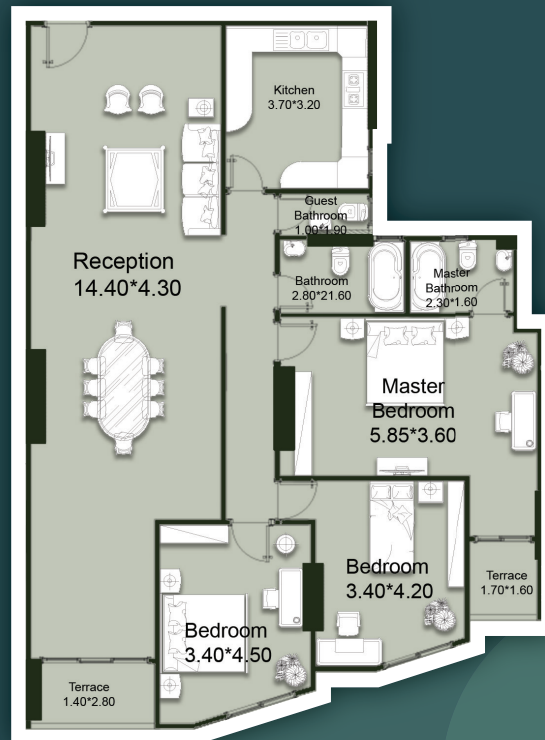
Net Area: 138.20
Gross Area: 158.93



Net Area: 143.80
Gross Area: 165.37



Net Area: 157.47
Gross Area: 181.09





Al Mahrousa St. - Al Mohadesseen - Giza

📍 35, Omar Ben El Khatab, Ismailya Sq., Heliopolis

📞 (02) 24153279 - 24182917 - 24183022

📞 01227889166 - 01287181744

📞 19047

✉️ info@alhalawany.com

🌐 www.alhalawany.com